

RESOLUTION NUMBER 7700

WHEREAS, the University of Nebraska-Lincoln has awarded the City of Beatrice, Nebraska (“City”) funding from the Inflation Reduction Act (“IRA”) Forestry Grant program for the purpose of removing and planting trees throughout the City and for the development of a tree inventory for the City of Beatrice; and

WHEREAS, on or about March 3, 2025, the City Retained JEO Consulting Group, Inc. (“JEO”) to develop the City’s tree inventory (the “Agreement”); and

WHEREAS, the City and JEO desire to execute Supplement #1 to the agreement to retain JEO to inventory additional trees for the City’s tree inventory.

NOW, THEREFORE, BE IT RESOLVED BY THE MAYOR AND CITY COUNCIL OF THE CITY OF BEATRICE, NEBRASKA:

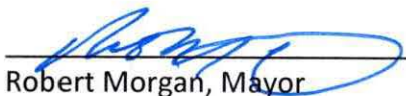
SECTION 1. That the Mayor, City Clerk, and City Administrator are hereby authorized to execute Supplement #1 of the Agreement for Professional Services dated March 3, 2025 to retain JEO to inventory additional trees for the City’s tree inventory. A copy of said Supplement, marked as “Exhibit A”, is attached hereto and incorporated by reference.

SECTION 2. That all resolutions or parts of resolutions in conflict herewith are hereby repealed.

RESOLUTION PASSED AND ADOPTED this 5th day of January, 2026.

Attest:


Erin Saathoff, MMC, City Clerk


Robert Morgan, Mayor



Supplement #1

City of Beatrice Tree Inventory
City of Beatrice, NE
JEO Project # 242242.00

December 12th, 2025

REFERENCE: Supplemental Agreement and Scope of Services between Owner and Consultant for professional services dated February 9, 2025. Except as noted below, all other terms and conditions remain unchanged.

SUPPLEMENT #1 BACKGROUND:

JEO Consulting Group, Inc. (JEO) is providing this fee estimate for additional tree inventory for the City of Beatrice Tree Inventory project. It is JEO's understanding that the proposed project will require additional site visits to assess tree conditions and data collection.

TASK DESCRIPTION:

The consultant shall perform the following tasks for this project:

- **Additional Tree Inventory Phase**
JEO will communicate and coordinate with the City of Beatrice for additional tree inventory east of 6th Street/HWY 77 (see Figure 1). JEO will collect inventory data on trees within the City right-of-way to provide accurate and detailed information.
- **Data Confirmation and Accuracy**
After data collection has been completed, JEO will review the data to confirm accuracy when compared to current aerial imagery. Once data accuracy has been confirmed, the inventory data will be entered into Tree Plotter software.
- **Urban Forest Management Plan**
JEO will use Tree Plotter to analyze selected features of the inventory data and provide the City with the final geodatabase that includes the fields of the data collection. JEO will also provide the City with an Urban Forestry Management Plan for the inventoried areas, including maps of the inventoried trees by GPS location.

PROJECT SCHEDULE

- Additional Tree Inventory Phase – January 5th – March 27th, 2026
- Data Confirmation and Accuracy – March 30th – April 10th, 2026
- Urban Forest Management Plan – March 30th – April 17th, 2026

ADDITIONAL PROJECT FEE

JEO will provide the services described herein for a fixed fee amount of \$28,250. Additional services as requested by the City can be provided based upon JEO's current hourly rate schedule.



Supplement #1

City of Beatrice Tree Inventory
City of Beatrice, NE
JEO Project # 242242.00

December 12th, 2025

SERVICES NOT INCLUDED WITH THIS PHASE: (If necessary, a fee for these services can be negotiated as part of the next phase.)

- Obtaining right-of-entry to private properties.
- Tree removal or implementing other maintenance items.
- Other biological surveys or compliance with other agency requests.
- Environmental permitting.
- Additional revisions and resubmittals beyond those mentioned above.



Supplement #1

City of Beatrice Tree Inventory
City of Beatrice, NE
JEO Project # 242242.00

December 12th, 2025

IN WITNESS WHEREOF, the parties hereto have executed this amendment to the original Agreement.

Owner:

Engineer: JEO Consulting Group, Inc.

By: Tobias Tempelmeyer

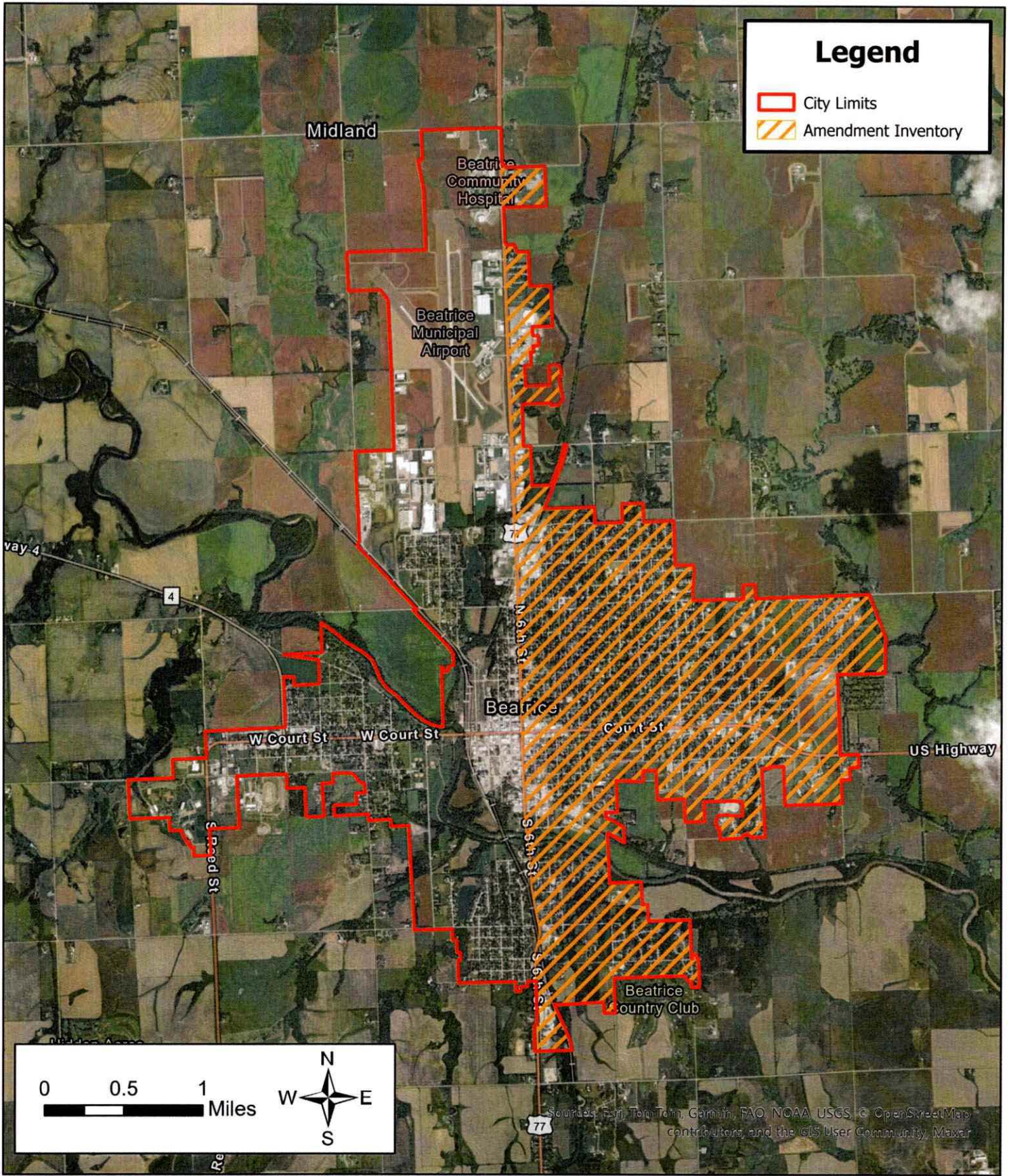
By: Zach Cunningham

Title: City Administrator/General Manager

Title: Environmental Department Manager

Date Signed: 1-5-26

Date Signed: 12/12/25



Created By: S. Anderson
 Date: 9/2025
 Software: ArcGIS Pro 3.5.0
 File: Beatrice Tree Inv.aprx

This map was prepared using information from record drawings supplied by JEO and/or other applicable city, county, federal, or public or private entities. JEO does not guarantee the accuracy of this map or the information used to prepare this map. This is not a scaled plot.

Beatrice Tree Inventory

Amendment Inventory Map Beatrice, NE

